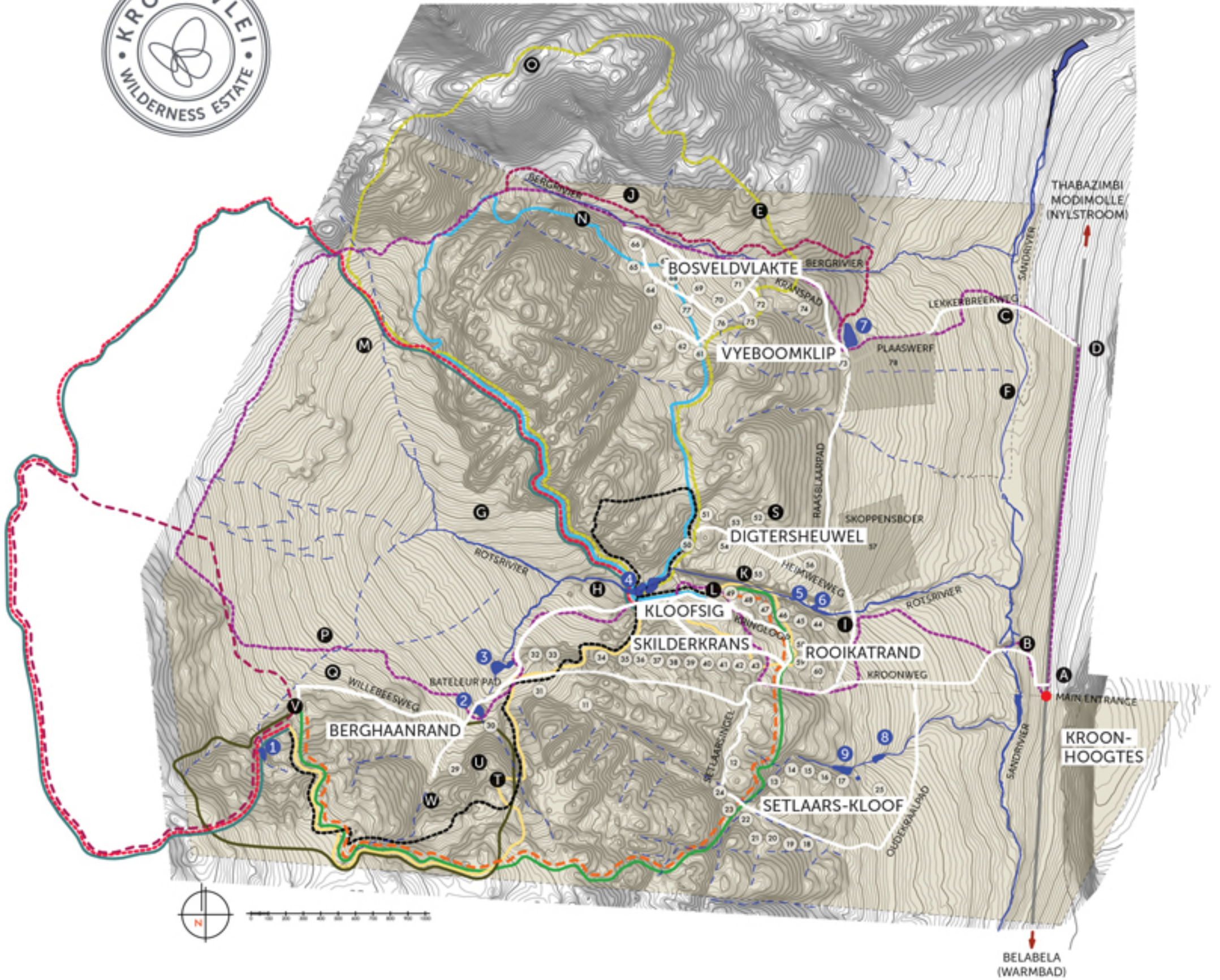


# ACTIVITIES AND POINTS OF INTEREST MAP



## HIKING TRAILS

- BUSHPIG TRAIL (6,8 km)
- - - ESCARPMENT TRAIL (6,4 km)
- GAME TRAIL (4,1 km)
- - - KLOOF TRAIL (11,6 km)
- LEOPARD TRAIL (11,6 km)
- MOEPEL TRAIL (8,4 km)
- - - PORCUPINE TRAIL (7,2 km)
- - - QUAGGA TRAIL (6,0 km)
- - - SUNSET TRAIL (11,3 km)
- ZEBRA TRAIL (6,0 km)

## MOUNTAIN BIKE TRAILS

- - - AARDVARK LOOP (23,11 km, Level 2)

## DAMS

- 1** KAALGAT-DAM
- 2** LELIE-DAM
- 3** VISAREND-DAM
- 4** KLOOF-DAM
- 5** OTTER-DAM
- 6** HAMERKOP-DAM
- 7** JACANA-DAM
- 8** BOS-DAM
- 9** KLIPMUUR-DAM

## POINTS OF INTEREST

- |                         |                              |
|-------------------------|------------------------------|
| <b>A</b> MAIN ENTRANCE  | <b>M</b> OLD RUINS           |
| <b>B</b> THE BRIDGE     | <b>N</b> LARGE ROCK          |
| <b>C</b> SPOOK-BRIDGE   | <b>O</b> HOEPHOEP VIEW POINT |
| <b>D</b> SERVICE GATE   | <b>P</b> SERVICE GATE        |
| <b>E</b> KOEDOE-VLEI    | <b>Q</b> STONE COTTAGE       |
| <b>F</b> VLAKVARK-VLEI  | <b>R</b> VAALBOOM COTTAGE    |
| <b>G</b> VLINDER-VLEI   | <b>S</b> GUMTREE COTTAGE     |
| <b>H</b> ROCK POOLS     | <b>T</b> FARMHOUSE           |
| <b>I</b> HAMERKOP-VLEI  | <b>U</b> MOUNTAIN VILLA      |
| <b>J</b> LUIPERDS-KLOOF | <b>V</b> STAMVRUG BASE CAMP  |
| <b>K</b> PARADYS-KLOOF  | <b>W</b> RECEPTION           |
| <b>L</b> BOBBEJAANSGAT  |                              |